

Section 6

Parts Lists

General

The information contained in this section is designed to aid the user in locating and identifying replacement parts. Component parts of various assemblies and sub-assemblies comprising the work platform are illustrated and accompanied by a descriptive parts list. Exploded drawings are used to show relative location of component parts in disassembly order. If a part cannot be found in this section, order by work platform model number and serial number, giving a complete description of the part.

Parts Ordering Information

When ordering replacement parts, the complete part number and description should be used to ensure proper identification and delivery of the desired item. This complete identification should also be used when requesting equipment information.

Method Of Listing

Parts are listed in order according to the reference number shown in the illustration, followed by a full description based upon the "NOUN FIRST" method. That is, the noun name of the part is listed first, then the modifying description information which serves to specifically identify the item. For example: PIN, Clevis. Assemblies or groups are shown at the beginning of a parts list and are identified with the letter references A, B, C, etc. Individual parts in these lists have corresponding letters after their description to identify which assembly or group it is used in. Individual parts without identifying

letters are used in all the assemblies or group shown at the beginning of the parts list. Descriptions preceded with an (•) indicates a serviceable component or attaching hardware for the higher level assembly.

Quantities (Units Per Assy.)

The quantities of each part that are required to complete the assembly. If quantity is (AR), it is understood that the quantity may vary when machine is equipped with certain options. Order quantity as needed.

Hardware

Standard screws, washers, nuts, etc. are not identified by a reference number. These parts are known as COMMON HARDWARE items and appear indented under the major items with which they are used. They should be ordered separately as listed, since they are not component parts of the pieces they attach to.

How To Order Repair Parts

1. Address all orders to your local SKYJACK dealer.
2. Specify model and serial number of the work platform (found on the serial number plate).
3. List the quantity needed.
4. List the length needed (if bulk item).
5. List the part number and description as shown in this manual for each item.
6. Show billing and shipping address and name of individual if possible.
7. Suggest best routing.

CUSTOMER _____

DEALER _____

MODEL NUMBER _____

SERIAL NUMBER _____

DATE PURCHASED _____

Use Only Skyjack Authorized Replacement Parts!

Table Of Contents

Platform And Related Parts

Figure 6.1-1	Operator's Control Box Assembly	4
--------------	---------------------------------------	---

Scissors And Related Parts

Figure 6.2-1	Angle Transducer & Beeper/Light Assembly	9
Figure 6.2-2	Lift Cylinder Assembly	10
Figure 6.2-3	Holding Valve Assembly	12

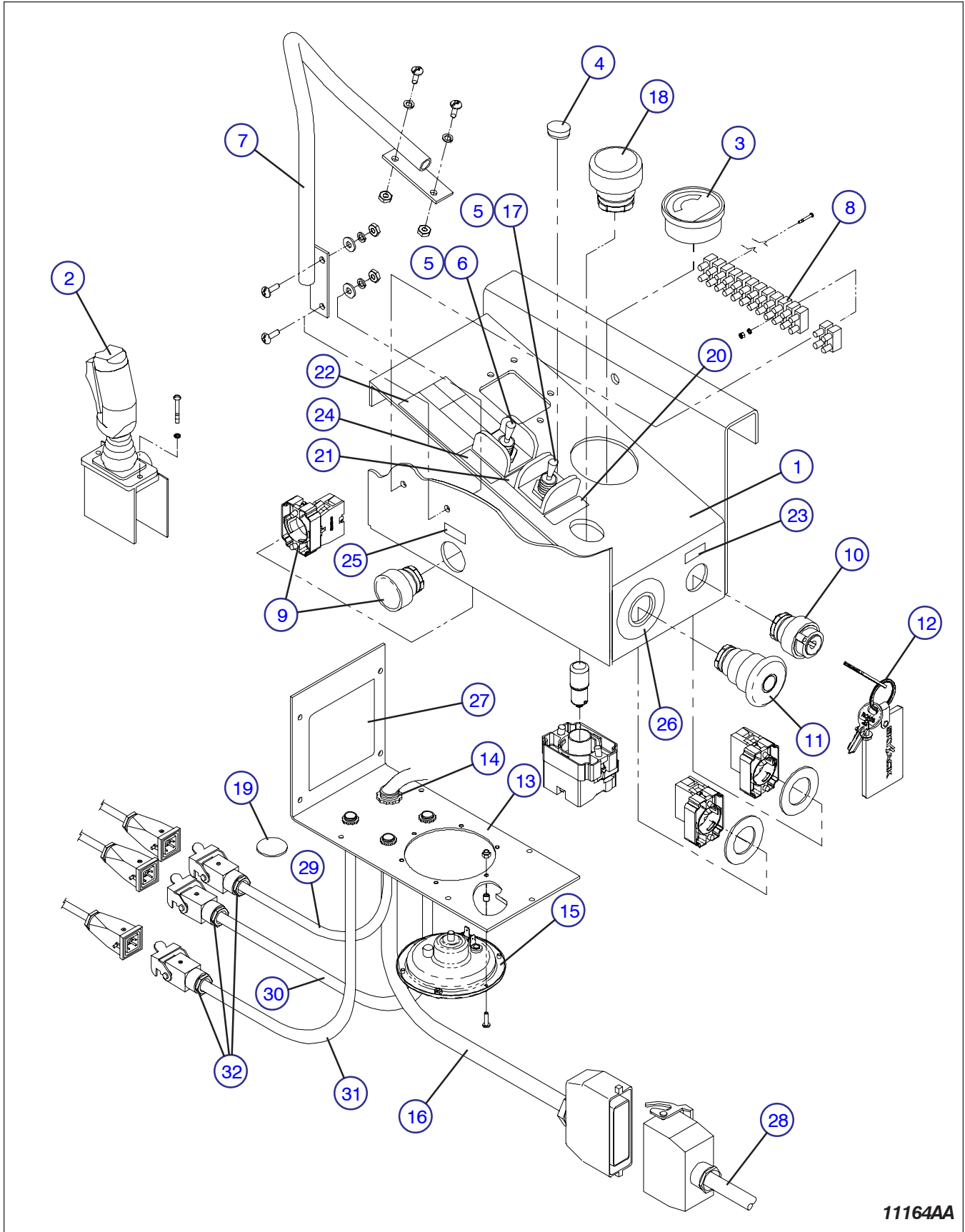
Base And Related Parts

Figure 6.3-1	Control Module Assembly	14
--------------	-------------------------------	----

Electrical Panel Assembly

Figure 6.4-1	Electrical Panel Assembly (Model 3215/3219)	16
Figure 6.4-2	Electrical Panel Assembly (Model 3220/3226/46XX/4832/68XX)	18
Figure 6.4-3	Electrical Panel Connection Harness	20
Figure 6.4-4	Base Control Box Assembly	24

Figure 6.1-1. Operator's Control Box Assembly



11164AA

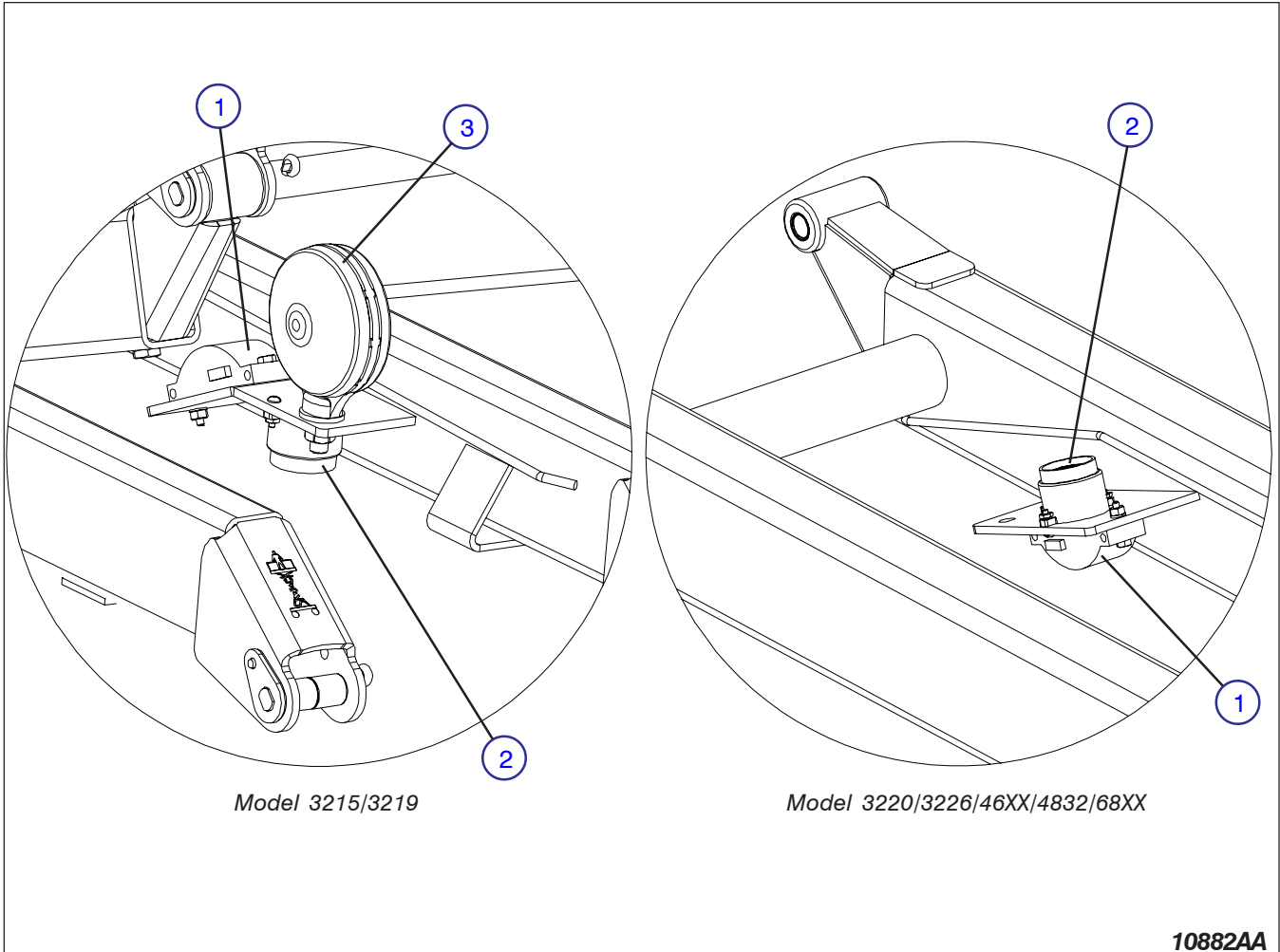
Figure 6.1-1. Operator's Control Box Assembly

Index No.	Skyjack Part No.	Qty.	Description
A	130574	-	CONTROL BOX, Assembly (Model 3215 & 3219)
B	130593	-	CONTROL BOX, Assembly (Model 3220/46XX/48XX/68XX with Manual Ext)
C	130595	-	CONTROL BOX, Assembly (Model 3220 with Powered Extension)
D	130594	-	CONTROL BOX, Assembly (Model 46XX/48XX/68XX with Powered Extension)
1	130564	1	WELDMENT, Control Box
2	(Ref.)	-	JOYSTICK, Controller Proportional. (For components, refer to Standard Maintenance & Parts Manual)
	300831	2	SCREW, Machine Flat Head #10 - 32 x 5/8
3	122093	1	INDICATOR, Battery Charger
4	114377	1	PLUG, Plastic 1/2", A
5	111181	AR	GUARD, Toggle Switch
6	116382	1	SWITCH, Lift/Off/Drive Toggle, A
	115574	1	SWITCH, Torque Toggle, B, C, D
7	124153	1	GUARD, Joystick
	103962	4	• SCREW, Round Hd Machine #10 - 32 x 1/2"
	104694	2	• WASHER, Flat #10
	104185	4	• WASHER, Lock #10
	104003	4	• NUT, Machine #10 - 32
8	103012	1	BLOCK, Terminal 12 Position Small
	103955	2	• SCREW, PPHMS #6 - 32 x 3/4
	103985	2	• NUT, Hex Head #6 - 32
9	(Ref.)	1	ASSEMBLY, Horn Switch
	102851	1	• HEAD, Push Button Switch
	103100	1	• BASE, Block Contact
	103141	1	• SWITCH, N.O. Contact
10	(Ref.)	1	ASSEMBLY, Key Switch
	102754	1	• HEAD, Key Switch 2 Position, A
	103082	1	• HEAD, Key Switch 3 Position, B, C, D
	103100	1	• BASE, Block Contact
	103141	AR	• SWITCH, N.O. Contact
	100149	1	• WASHER, Switch Mount
11	(Ref.)	1	ASSEMBLY, Emergency Stop Switch
	102769	1	• HEAD, Emergency Stop Switch
	103100	1	• BASE, Block Contact
	103225	1	• SWITCH, N.C. Contact
	100149	1	• WASHER, Switch Mount
			Part list continued on the following page.
			Refer to Section 6 of the Maintenance & Parts Manual for all other components.

Figure 6.1-1. Operator's Control Box Assembly (Continued)

Index No.	Skyjack Part No.	Qty.	Description
			Part list continued from the previous page.
12	114710	1	RING, Key Skyjack Logo
13	310625	1	WELDMENT, Control Box Bottom Cover
	112327	9	• SCREW, Hex Hd Self-tapping #8-18 x 1/2"
14	300788	1	CONNECTOR, Strain Relief
15	121058	1	HORN, 24 Volt
	116220	2	• SCREW, Machine M4 x 0.7 x 16mm
	121484	4	• NUT, Hex Nylon Lock M4 x 0.70
16	310325	1	ASSEMBLY, Control Cable, A
	103574	1	• CONNECTOR, Male 16 Pin
	119727	2	• PIN, Code
	102887	32"	• CABLE, Control 16/15
	103564	1	• HOUSING, Top
	119731	1	CABLE ASSEMBLY, Control box, B, C, D
	107820	1	• CONNECTOR ASSEMBLY, 16 Pole male
	102887	27"	• CABLE, 16/15
	118711	2	• LABEL, Hydraulic proportional
	119727	2	• CODE, Pin
17	116382	1	SWITCH, Lift/Off/Drive Toggle, B, C, D
18	(Ref.)	1	ASSEMBLY, On/Overload Light
	103202	1	• CAP, Top Light Cover
	102771	1	• BULB, 24 Volt
	102671	1	• MOUNT, Base Light
19	300460	AR	PLUG, Snap In 7/8" Hole, A, B, C
20	130639	1	LABEL, Overload
21	130638	1	LABEL, Lift/O/Drive, B, C, D
22	130634	1	LABEL, Lift/Drive Direction, A
	130434	1	LABEL, Lift/Drive Direction, B, C, D
23	130617	1	LABEL, Base/Off/Platform
24	116577	1	LABEL, Low/High Torque, B, C, D
	130638	1	LABEL, Lift/O/Drive, A
25	105352	1	LABEL, Horn
26	111814	1	LABEL, Emergency Stop
27	124199	1	LABEL, Joystick Connector
28	(Ref)	-	ASSEMBLY, Scissor Arm Control Cable
29	103257	AR	CORD, Cabtire 18/3 (Power Deck Control Box), C, D
30	103256	AR	CORD, Cabtire 18/2 (Power Deck Limit Switch), D
31	103255	27"	CORD, Cabtire 18/4 (Power Deck Solenoid), C, D
32	107711	3	CONNECTOR ASSEMBLY, 5 Pole female
			(For components, refer to Standard Maintenance & Parts Manual)
			Refer to Section 6 of the Maintenance & Parts Manual for all other components.

Figure 6.2-1. Angle Transducer & Beeper/Light Assembly



Model 3215/3219

Model 3220/3226/46XX/4832/68XX

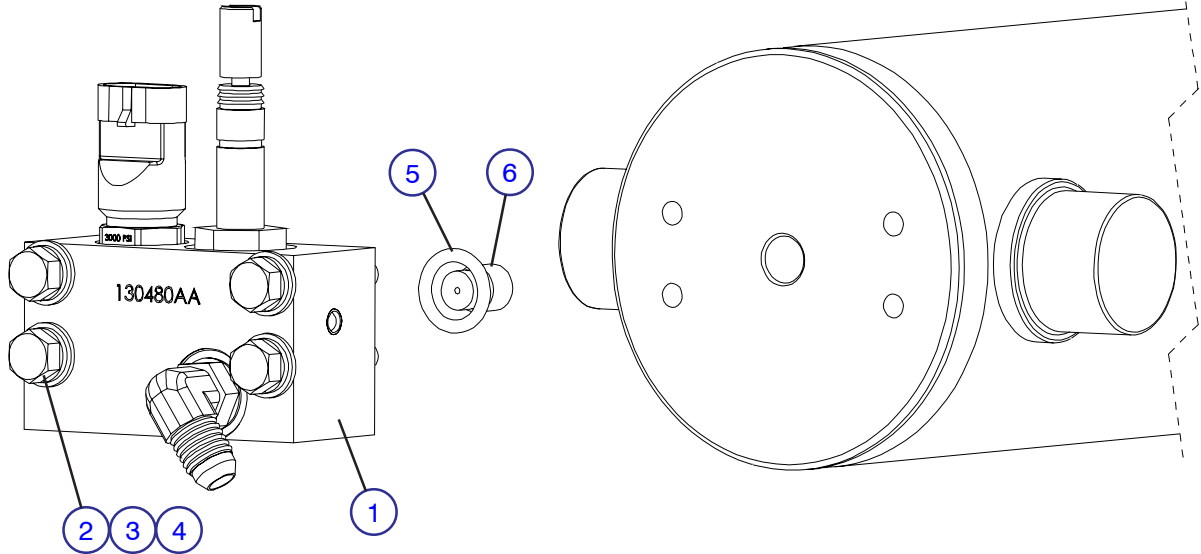
10882AA

Index No.	Skyjack Part No.	Qty.	Description
1	130440	1	TRANSDUCER, Angle
	103858	2	• BOLT, Hex Hd 1/4"-20 x 1-1/4" Gr. 5
	104000	2	• WASHER, Lock 1/4"
2	103980	2	• NUT, Hex 1/4"-20 Gr. 5
	117967	1	BEEPER, Alarm 28 V
	104698	2	• SCREW, Round Hd #10-32 x 3/4"
3	104185	2	• WASHER, Lock #10 (If Equipped)
	104003	2	• NUT, Hex #10-32
	121477	1	LIGHT ASSEMBLY, Beacon w/ Terminals 24 V (Model 3215/3219 only)

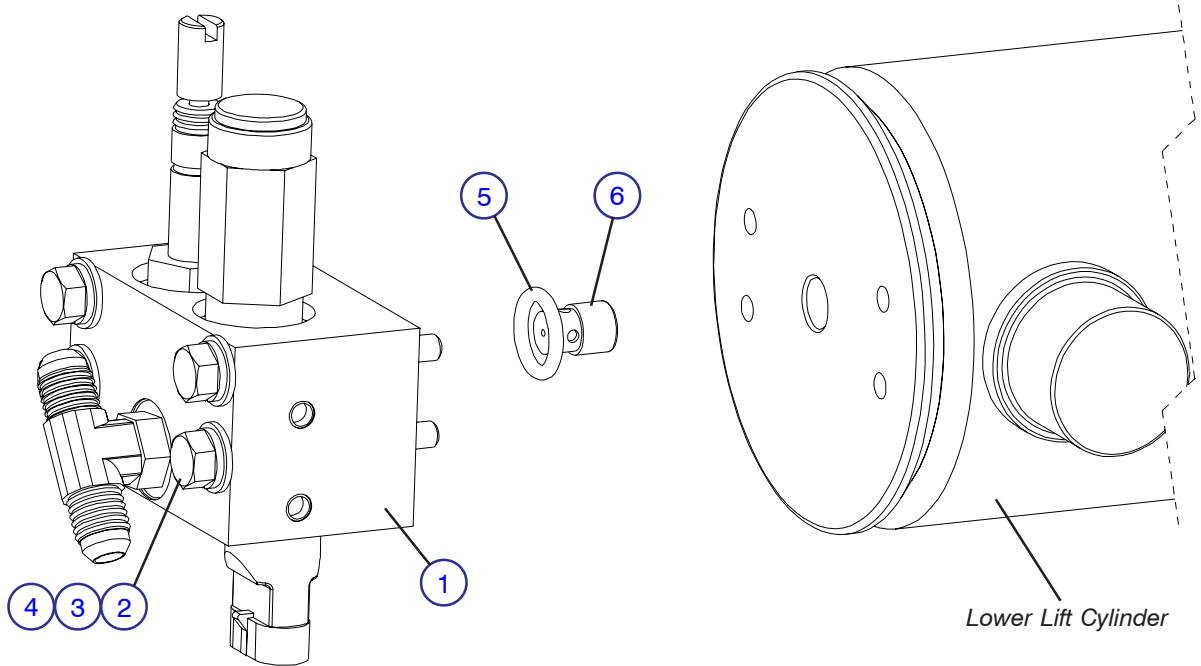
Refer to Section 6 of the Maintenance & Parts Manual for all other components.

Figure 6.2-2. Lift Cylinder Assembly

Model 3215/3219/3220/4620



Model 3226/4626/4832/68XX



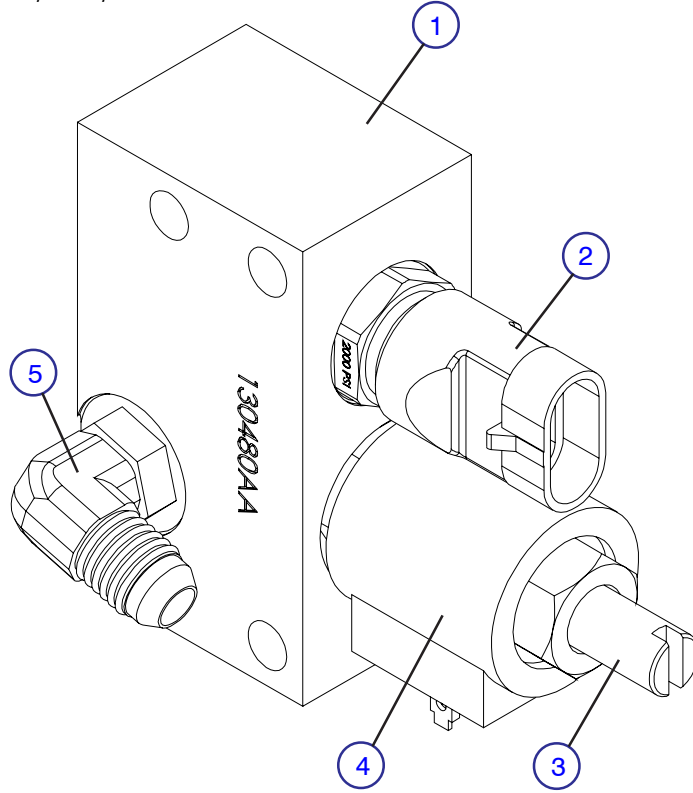
10851AA

Figure 6.2-2. Lift Cylinder Assembly

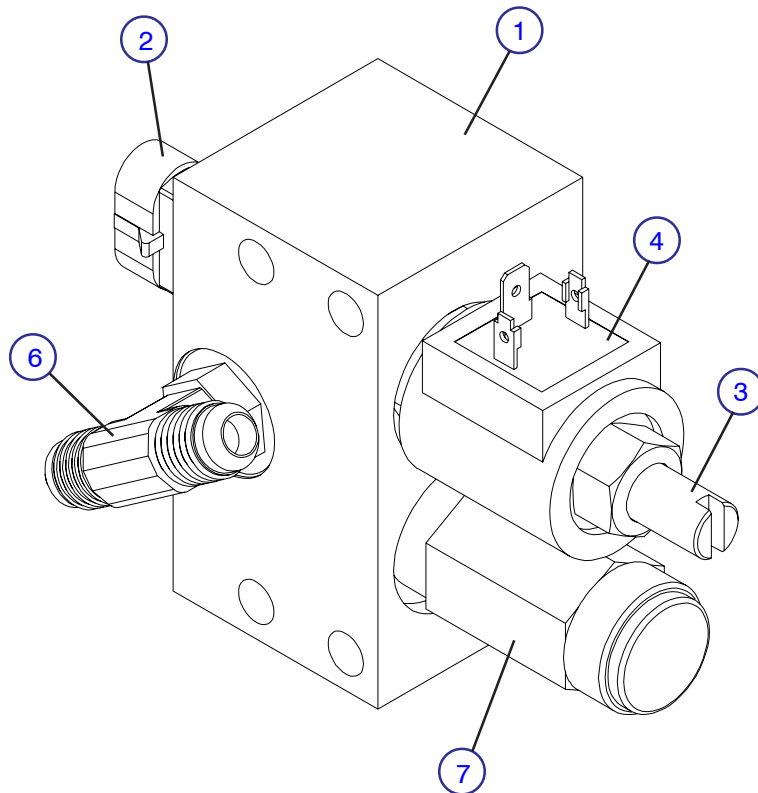
Index No.	Skyjack Part No.	Qty.	Description
1	(Ref.)	-	MANIFOLD ASSEMBLY, Holding Valve (For Components, Refer to Figure 6.2-3)
2	103405	4	BOLT, Socket Hd 5/16" x 2" (Model 3215/3219 only)
	103865	4	BOLT, Hex Hd 5/16"-18 x 2" Gr. 5 (Model 3220/4620)
	108429	4	BOLT, Hex Hd 5/16"-18 x 2.5" Gr. 5 (Model 3226/4626/4832/68XX)
3	103404	4	WASHER, Lock 5/16"
4	103996	4	WASHER, Flat 5/16"
5	103403	1	SEAL, O - Ring
6	105281	1	ORIFICE, Emergency lowering
			Refer to Section 6 of the Maintenance & Parts Manual for all other components.

Figure 6.2-3. Holding Valve Assembly

Model 3215/3219/3220/4620



Model 3226/4626/4832/68XX



10951AA

Figure 6.2-3. Holding Valve Assembly

Index No.	Skyjack Part No.	Qty.	Description
1	130480	1	BLOCK ASSEMBLY, Manifold (Model 3215/3219/3220/4620)
	130481	1	• BLOCK, Manifold
	108052	1	• PLUG, Expander
	130443	1	BLOCK ASSEMBLY, Manifold (Model 3226/4626/4832/68XX)
	130442	1	• BLOCK, Manifold
	108052	2	• PLUG, Expander
2	130431	1	TRANSDUCER, Pressure 2000 psi (Model 3215/3220/3226/4626/4832)
	130432	1	TRANSDUCER, Pressure 3000 psi (Model 3219/4620/68XX)
3	107269	1	VALVE, Lift Cylinder Holding
4	104493	1	COIL, 24 V (3-prong)
5	114578	1	FITTING, Elbow 90 deg
6	114579	1	FITTING, Tee
7	106557	1	VALVE, Relief
			Refer to Section 6 of the Maintenance & Parts Manual for all other components.

Figure 6.3-1. Control Module Assembly

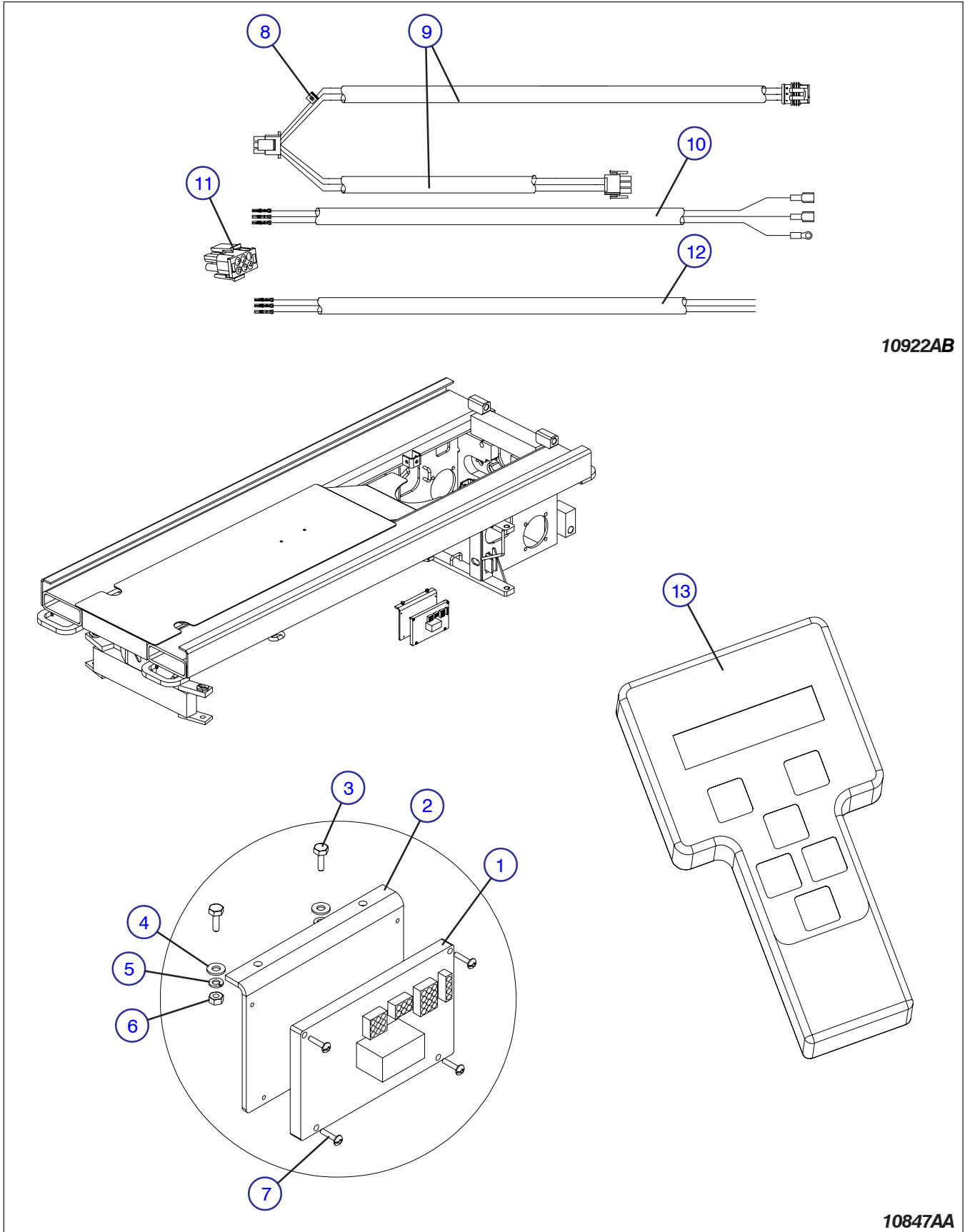
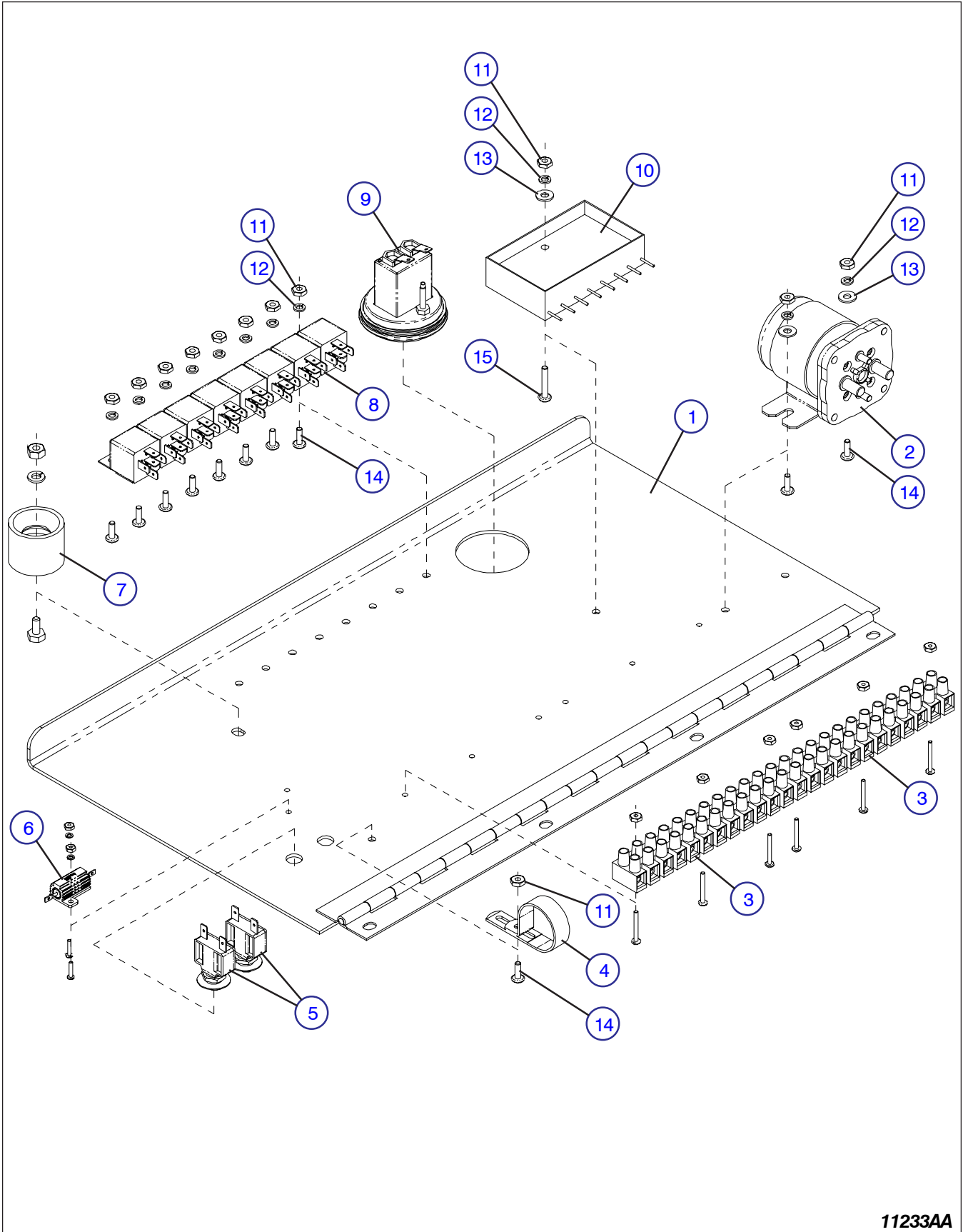


Figure 6.3-1. Control Module Assembly

Index No.	Skyjack Part No.	Qty.	Description
1	130439	1	SENSOR, Integrated Tilt Sensor
2	130468	1	BRACKET, Control Module
3	103891	2	BOLT, Hex Hd 1/4"-20 x 7/8" Gr. 5 (Model 3215/3219 only)
	103856	2	BOLT, Hex Hd 1/4"-20 x 3/4" Gr. 5 (Model 3220/3226 only)
4	103995	2	WASHER, Flat 1/4"
5	104000	2	WASHER, Lock 1/4"
6	103980	2	NUT, Hex 1/4"-20 Gr. 5
7	104698	4	SCREW, Rnd Hd Machine #10-32 x 3/4"
8	102921	1	DIODE
9	130781	1	HARNESS, Control Module to Transducers (Model 3215/3219)
	130780	1	HARNESS, Control Module to Transducers (All except Model 3215/3219)
	103257	AR	• CABTIRE, Cable 18/3
	116990	8	• PIN, Female Wire
	116993	1	• HOUSING, Male 9-Pole Plug
	130446	1	• PLUG, Male 3-Pole
	130478	1	• PLUG, 3 Way Series
10	130779	1	HARNESS, Beeper & Light (Model 3215/3219)
	130776	1	HARNESS, Beeper & Light (All except Model 3215/3219)
	103257	AR	• CABTIRE, Cable 18/3
	116990	3	• PIN, Female Wire
11	130445	1	HOUSING, Male 6-Pole Plug
12	(Ref.)	-	HARNESS, Relays to Control Module (For Components, Refer to Figure 6.4-3)
13	130477	1	KIT, Hand Held Calibration/Diagnostic Tool
	130441	1	• TOOL, Hand Held Calibration/Diagnostic
	130457	1	• CABLE, Computer Cable 24 Gauge
	130448	1	• PLUG, Male 4-Pole
	130451	1	• PLUG, Male 4-Pole (Enclosed Version)

Refer to Section 6 of the Maintenance & Parts Manual for all other components.

Figure 6.4-1. Electrical Panel Assembly (Model 3215/3219)

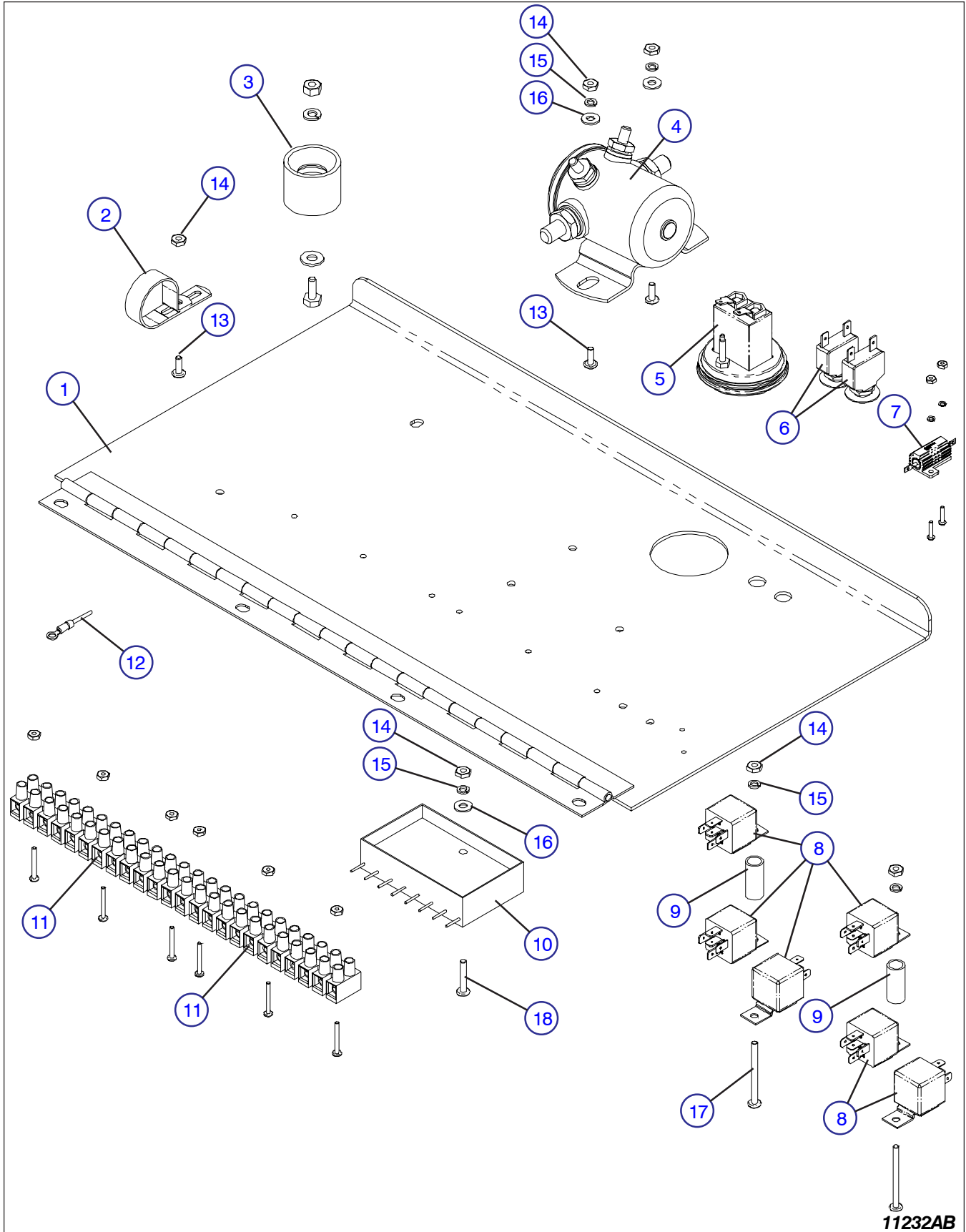


11233AA

Figure 6.4-1. Electrical Panel Assembly (Model 3215/3219)

Index No.	Skyjack Part No.	Qty.	Description
A	130648	1	ASSEMBLY, Electrical Panel (CE with LoadSensingSystem)
1	130647	1	• WELDMENT, Control panel
	112495	4	• • BOLT, Hex Hd 1/4"-20 x 3/8" Gr. 5
2	103101	1	• CONTACTOR, Solenoid (SPNO)
3	103011	2	• BLOCK, Terminal 12P
	103956	6	• SCREW, Round head #6-32 x 1.0"
	103985	6	• NUT, Hex head #6-32
4	102509	1	• CLAMP, Plastic cable
5	117325	2	• BREAKER, Circuit 15 Amp
6	115312	1	• RESISTOR, Prop. speed 40 Ohms 25 Watt
	116066	2	• SCREW, Round head machine #4-40 x 1/2"
	116068	2	• WASHER, Lock #4
	116067	2	• NUT, Hex #4-40
7	125893	1	• BUMPER, Rubber Female
	103855	1	• BOLT, Hex head 1/4"-20 x 1/2" Gr. 5
	103995	1	• WASHER, Flat 1/4"
	104000	1	• WASHER, Lock 1/4"
	103980	1	• NUT, Hex 1/4"-20
8	108589	8	• RELAY, 24V sealed
9	103336	1	• HOURMETER
10	128196	1	• MODULE, Encapsulated Diode
11	104003	12	• NUT, Hex head #10-32
12	104185	11	• WASHER, Lock #10
13	104694	3	• WASHER, Flat #10
14	103962	11	• SCREW, Round head machine #10-32 x 1/2"
15	105621	1	• SCREW, Round head #10-32 x 1.0"
			Refer to Section 6 of the Maintenance & Parts Manual for all other components.

Figure 6.4-2. Electrical Panel Assembly (Model 3220/3226/46XX/4832/68XX)

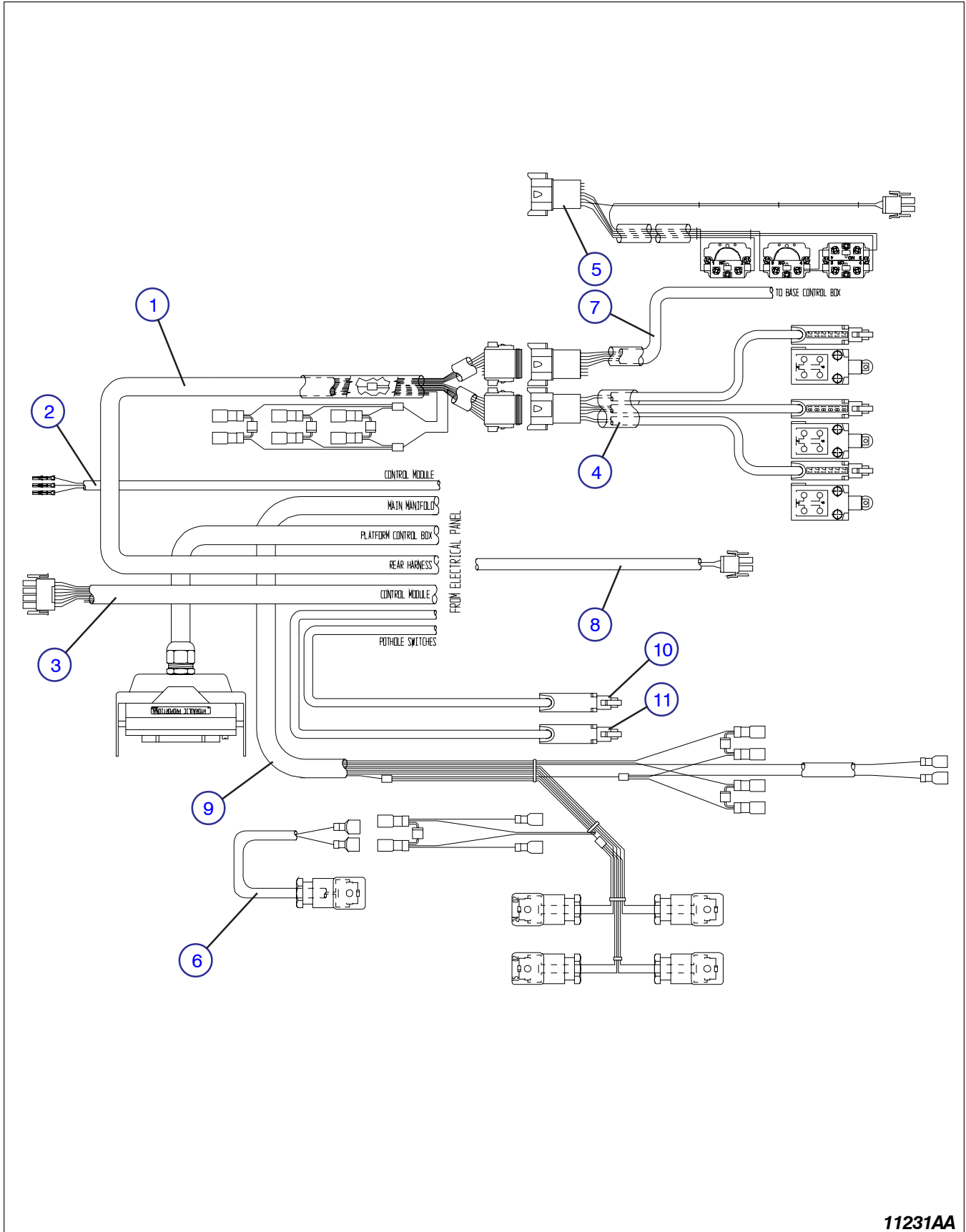


11232AB

Figure 6.4-2. Electrical Panel Assembly (Model 3220/3226/46XX/4832/68XX)

Index No.	Skyjack Part No.	Qty.	Description
A	130888	1	ASSEMBLY, Electrical Panel (CE with LoadSensingSystem)
1	130579	1	• WELDMENT, Control panel
	112495	4	• • BOLT, Hex Hd 1/4"-20 x 3/8" Gr. 5
2	102509	1	• CLAMP, Plastic cable
3	125893	1	• BUMPER, Rubber Female
	103892	1	• BOLT, Hex head 1/4"-20 x 5/8" Gr. 5
	103995	1	• WASHER, Flat 1/4"
	104000	1	• WASHER, Lock 1/4"
	103980	1	• NUT, Hex 1/4"-20
4	103101	1	• CONTACTOR, Solenoid (SPNO)
5	103336	1	• HOURMETER
6	117325	2	• BREAKER, Circuit 15 Amp
7	129182	1	• RESISTOR, Prop. speed 30 Ohms 25 Watt (Model 32XX/46XX/48XX)
	130892	1	• RESISTOR, Prop. speed 40 Ohms 25 Watt (Model 3220 with Power Deck)
	129183	1	• RESISTOR, Prop. speed 20 Ohms 25 Watt (Model 68XX)
	116066	2	• SCREW, Round head machine #4-40 x 1/2"
	116068	2	• WASHER, Lock #4
	116067	2	• NUT, Hex #4-40
8	108589	6	• RELAY, 24V sealed
9	116711	2	• SPACER, Relay Stand-off
10	119758	1	• MODULE, Encapsulated Diode
11	103011	2	• BLOCK, Terminal 12P
	103956	6	• SCREW, Round head #6-32 x 1.0"
	103985	6	• NUT, Hex head #6-32
12	130149	1	• HARNESS, Ground "02"
13	103962	3	• SCREW, Round head machine #10-32 x 1/2"
14	104003	6	• NUT, Hex head #10-32
15	104185	5	• WASHER, Lock #10
16	104694	3	• WASHER, Flat #10
17	104546	2	• SCREW, Round head #10-32 x 2.0"
18	105621	1	• SCREW, Round head #10-32 x 1.0"
			Refer to Section 6 of the Maintenance & Parts Manual for all other components.

Figure 6.4-3. Electrical Panel - Harness



11231AA

Figure 6.4-3. Electrical Panel - Harness

Index No.	Skyjack Part No.	Qty.	Description	
1	130651	1	HARNESS, Rear Manifold/Limit Switch (Model 3215/3219)	
	102887	62"	• CABTIRE, Cable 16/15	
	117583	2	• PLUG, Connector 8-Pin	
	117585	2	• WEDGE, Connector Plug 8-Pin	
	117593	11	• SOCKET, Connector Contact	
	117594	5	• PLUG, Connector Sealing	
	130562	1	HARNESS, Rear Manifold/Limit Switch (Model 3220/3226/46XX/4832/68XX)	
	102887	76"	• CABTIRE, Cable 16/15	
	117583	2	• PLUG, Connector 8-Pin	
	117585	2	• WEDGE, Connector Plug 8-Pin	
	117593	11	• SOCKET, Connector Contact	
	117594	5	• PLUG, Connector Sealing	
	2	130671	1	HARNESS, Relays to Control Module
		103257	108"	• CABTIRE, Cable 18/3
116990		3	• PIN, Female Wire	
3	130598	1	HARNESS, Panel Load Sensor to Control Module	
	102888	98"	• CABTIRE, Cable 16/10	
	116990	8	• PIN, Female Wire	
4	130449	1	• HOUSING, Male 12-Pole Plug	
	130146	1	HARNESS, High Speed/Pothole Limit Switch Assembly (Model 3215/3219)	
	130559	1	HARNESS, High Speed/Override Limit Switch (Model 3220/3226/4832)	
	130556	1	HARNESS, High Speed/Cut-off Limit Switch (Model 68XX)	
	121975	AR	• SWITCH ASSEMBLY, Modified Drilled Sealed	
	119132	1	• KIT, 8-Pole Connector	
	133662	1	HARNESS, High Speed/Override Limit Switch (Model 46XX) (Order P/N 130559 for machines with Serial No. 66889 (4620), 709570 (4626), & below)	
5	133599	AR	• SWITCH ASSEMBLY, Modified Drilled Sealed (Order P/N 121975 for machines with Serial No. 66889 (4620), 709570 (4626), & below)	
	119132	1	• KIT, 8-Pole Connector	
	130649	1	HARNESS, Base Control with Charger Cut-Out Assembly (Model 3215/3219)	
	103278	1	• 2-N.O. CONTACT, Switch (Up/Down)	
	103280	1	• 1-N.O. CONTACT, Switch (Enable)	
	103281	1	• 1-SINGLE CONTACT, Switch (Emergency Stop)	
	119132	1	• KIT, 8-Pole Connector	

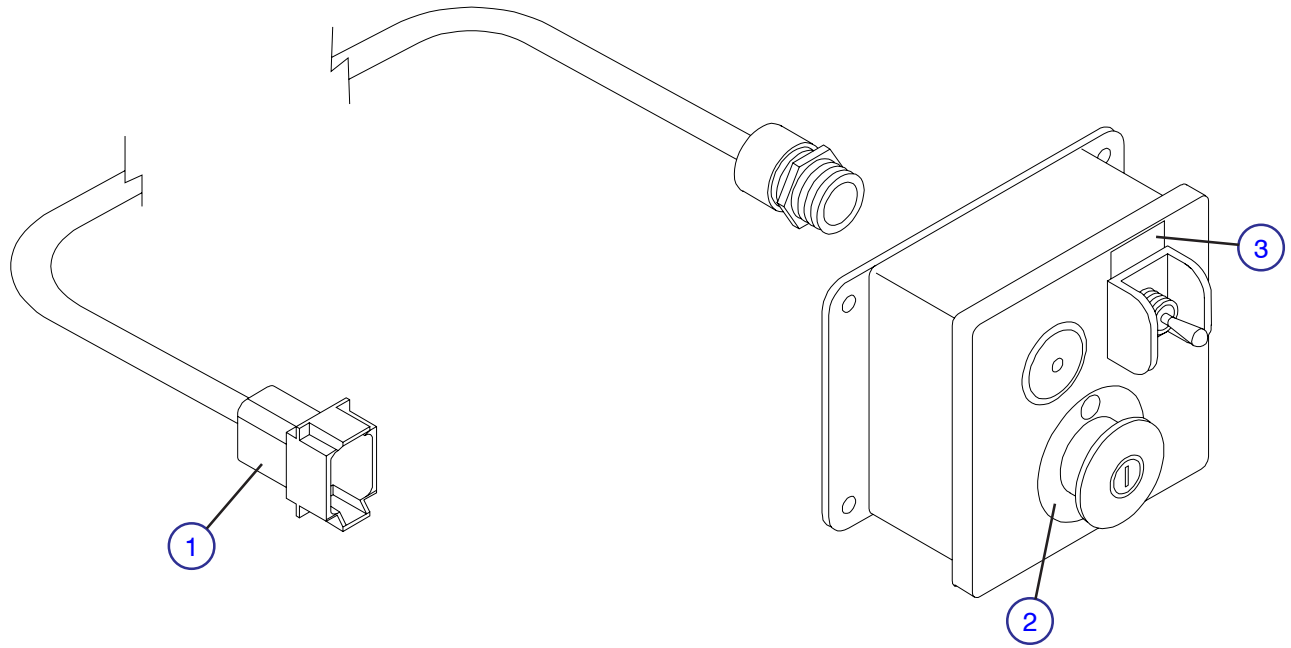
Part list continued on the following page.

Refer to Section 6 of the Maintenance & Parts Manual for all other components.

Figure 6.4-3. Electrical Panel - Harness (Continued)

Index No.	Skyjack Part No.	Qty.	Description
Part list continued from the previous page.			
6	120014	1	HARNESS, Holding Valve (Model 3215/3219)
	119825	1	• CONNECTOR, Solenoid with Diode
	103256	69"	• CABLE, Cabtire 18/2
	129171	1	HARNESS, Holding Valve (Model 3220/4620)
	119825	1	• CONNECTOR, Solenoid with Diode
	103256	69"	• CABLE, Cabtire 18/2
	129170	1	HARNESS, Holding Valve (Model 3226/4626/4832/68XX)
	119825	2	• CONNECTOR, Solenoid with Diode
	103256	278"	• CABLE, Cabtire 18/2
7	(Ref.)	1	ASSEMBLY, Base Control Assembly (Model 3220/3226/46XX/4832/68XX) (For Components, Refer to Figure 6.4-4)
8	130886	1	HARNESS, Charger Cut-Out
	105269	175"	• CABTIRE, 14/3
	116992	1	• CONNECTOR, 2-Pole Plug Male
	116990	2	• PIN. Female Wire
9	132838	1	HARNESS, Main Manifold
	119825	4	• CONNECTOR, Solenoid with diode
	102921	3	• DIODE
10	125886	1	HARNESS, Pothole Battery Tray Limit Switch (Model 3215/3219)
	125887	1	HARNESS, Pothole Battery Tray Limit Switch (Model 3220/3226/4832/68XX)
	133601	1	HARNESS, Pothole Battery Tray Limit Switch (Model 46XX) (Order P/N 125885 for machines with Serial No. 66889 (4620), 709570 (4626), & below)
11	125885	1	HARNESS, Pothole Hydraulic Tray Limit Switch (Model 32XX/4832/68XX)
	133600	1	HARNESS, Pothole Hydraulic Tray Limit Switch (Model 46xx) (Order P/N 125887 for machines with Serial No. 66889 (4620), 709570 (4626), & below)
Refer to Section 6 of the Maintenance & Parts Manual for all other components.			

Figure 6.4-4A. Base Control Box Assembly - Model 32XX, 46XX*, & 68XX
 (*For machines with Serial No. 66889 (4620), 709570 (4626), & below)

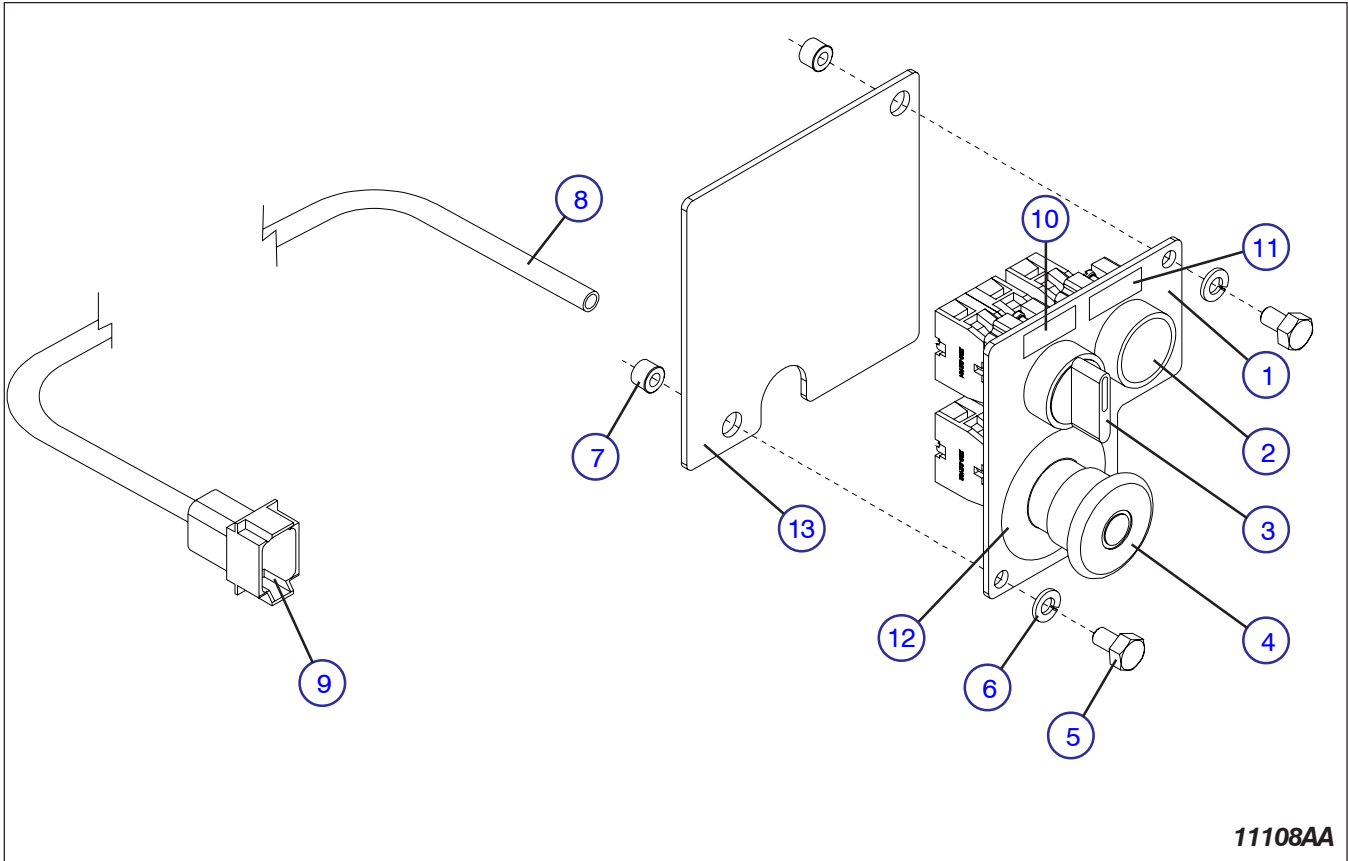


10889AA

Index No.	Skyjack Part No.	Qty.	Description
A	130567	1	ASSEMBLY, Base Control Box & Harness (Model 3220/3226)
B	130568	1	ASSEMBLY, Base Control Box & Harness (Model 46XX/4832/68XX)
1	119132	1	KIT-8 POLE, Deutsch Plug
	117582	1	• RECEPTACLE, Connector 8-pin
	117584	1	• RECEPTACLE, Connecotr 8-pin Wedge
	117590	5	• PIN, Connector Contact
	117594	3	• SEALANT, Connector Plug
2	111814	1	LABEL, Emergency Stop
3	130803	1	LABEL, Up/Off/Down

Refer to Section 6 of the Maintenance & Parts Manual for all other components.

Figure 6.4-4B. Base Control Box Assembly - Model 4620*, 4626*, & 4632
 (*For machines with Serial No. 710000, & above)



11108AA

Index No.	Skyjack Part No.	Qty.	Description
A	130863	-	BOX ASS'Y, Base control
1	130862	1	• PLATE, Front Base Control Mount
2	(Ref) 108854	- 1	• ASSEMBLY, Enable Switch • • HEAD, Push Button Switch
3	(Ref) 103280	- 1	• • CONTACT, Single Normally Closed • ASSEMBLY, Up/Down Switch
4	(Ref.) 102837	- 1	• • HEAD, Selector Switch • • CONTACT, Double Normally Open
5	127284	2	• BOLT, Hex Hd 1/4-20 x 2.5" Gr. 5
6	104000	2	• WASHER, Lock 1/4"
7	131954	2	• INSERT, Threaded 1/4"-20
(Ref.)	132207	1	• HARNESS, Switches to Electrical Panel
8	103257	12"	• • CORD, 18/3
9	119131	1	• • KIT-4 POLE, Deutsch plug
10	129868	1	LABEL, Up/Down
11	130790	1	LABEL, Enable
12	111814	1	LABEL, Emergency Stop
13	132701	1	• PLATE, Rear Cover

Refer to Section 6 of the Maintenance & Parts Manual for all other components.